

## DEPARTMENT OF ENVIRONMENTAL AFFAIRS

NO. 1089

23 AUGUST 2019

**NATIONAL ENVIRONMENTAL MANAGEMENT: INTEGRATED COASTAL  
MANAGEMENT ACT, 2008 (ACT NO. 24 OF 2008)****DRAFT GENERAL DISCHARGE AUTHORISATION IN TERMS OF SECTION 69(2)**

I, Barbara Dallas Creecy, Minister of Environment, Forestry and Fisheries, hereby publish a Draft General Discharge Authorisation in terms of section 69(2) of the National Environmental Management: Integrated Coastal Management Act, 2008 (Act No. 24 of 2008) as set out in the Schedule hereto, for public comment.

Any person who wishes to submit representations or comments in connection with the Draft General Discharge Authorisation is invited to do so within 30 calendar days of the date of publication of this notice in the *Gazette*. Comments received after this time may not be considered. All representations and comments must be submitted in writing to the following addresses:

By post to: The Deputy Director-General  
Department of Environment, Forestry and Fisheries  
**Attention:** Mr M Tshikotshi  
Branch: Oceans and Coasts  
Private Bag X4390  
**CAPE TOWN**  
8002

By hand at: 2 East Pier Building, East Pier Road, Victoria & Alfred Waterfront,  
Cape Town

By email: [Mtshikot@environment.gov.za](mailto:Mtshikot@environment.gov.za)



**BARBARA DALLAS CREECY**

**MINISTER OF ENVIRONMENT, FORESTRY AND FISHERIES**

## SCHEDULE

### 1. DEFINITIONS

A word or expression defined in the National Environmental Management: Integrated Coastal Management Act, 2008 (Act No. 24 of 2008) has the same meaning in this document, and—

“**influent water**” means coastal waters which is drawn into or abstracted into, a facility or process and which will be discharged into coastal waters as effluent;

“**neutrally-buoyant**” means when the effluent’s buoyancy is such that solid matter within the effluent does not sink to the bottom of the body of effluent nor rises to the top of that body of effluent, but will remain suspended and hang freely;

“**offshore**” means the area in coastal waters—

- (a) starting from the 10 meter isobath; or
- (b) starting at 500 meters in distance from the low-water mark,

whichever is further in distance from the low-water mark;

“**offshore discharge**” means a discharge of effluent into the offshore environment;

“**port**” means the defined area of a port described in Annexure 3;

“**positively-buoyant**” means where solid matter within the effluent will float towards the surface and stay there;

“**SANAS**” means the South African National Accreditation System established in terms of the Accreditation for Conformity Assessment, Calibration and Good Laboratory Practice Act, 2006 (Act No. 19 of 2006); and

“**the Act**” means the National Environmental Management: Integrated Coastal Management Act, 2008 (Act No. 24 of 2008).

### 1. Scope of applicability of this General Discharge Authorisation

- 1.1. This General Discharge Authorisation is applicable to discharges of effluent from land-based sources into coastal waters of the Republic, except for those areas set out in Annexure 1.
- 1.2. The General Discharge Authorisation also applies to the ports listed in Annexure 3.

## 2. Description of General Discharge Authorisation

A General Discharge Authorisation in terms of section 69(2) of the Act is hereby granted to any person discharging effluent into coastal waters from a land-based source where the effluent meets **ALL** of the following requirements.

- 2.1. The effluent will be neutrally-buoyant or positively-buoyant with respect to the coastal waters into which the effluent is being discharged.
- 2.2. In Table 1—
  - 2.2.1. for offshore discharges, the effluent's constituents do not exceed the General Limits specified in that table; and
  - 2.2.2. in respect of discharges into coastal waters other than the offshore environment, the effluent does not exceed the Special Limits specified in that table.
- 2.3. Where the volume of effluent being discharged exceeds—
  - (a) 10000 m<sup>3</sup> per day in the case of an offshore discharge; or
  - (b) 2000 m<sup>3</sup> per day in the case of discharges into coastal waters other than the offshore environment,

in addition to 2.2 above, the General Limits for an offshore discharge, and the Special Limits for a discharge other than an offshore discharge, specified in Table 2, apply.
- 2.4. Where the influent water's constituents exceed the General Limits and the Special Limits of Table 1, and where applicable, Table 2, the difference between the constituent quantities of the influent water, and that of the effluent, must not exceed the General Limits and the Special Limits in Table 1, and where applicable, Table 2.
- 2.5. In addition to the requirements in 2.1 to 2.4, a discharge of effluent into coastal waters will only be lawful under this General Discharge Authorisation if the provisions of sections 3, 4 and 5 are complied with.

## 3. Obligation to notify in writing

- 3.1. No person may discharge effluent in terms of this General Discharge Authorisation unless that person has notified the Department in writing of the intended discharge in compliance with 3.2.
- 3.2. A notification in terms of 3.1 must contain the following information:

- 3.2.1. the full name of the person or legal entity responsible for the discharge;
  - 3.2.2. the name of a contactable person and their contact details;
  - 3.2.3. a description of the facility and the process which is undertaken at the facility;
  - 3.2.4. GPS coordinates of the land-based operation (facility responsible for the generation of the effluent being discharged);
  - 3.2.5. GPS coordinates of the points of location of the discharge into coastal waters;
  - 3.2.6. the volume per day of effluent being discharged;
  - 3.2.7. the province and the municipal area in which the discharge occurs; and
  - 3.2.8. confirmation as to whether or not the discharge is continuous, a once-off or an intermittent discharge.
- 3.3. The notification must be dated and signed by the person notifying the Department or a representative, if a legal entity is undertaking the notification.

#### **4. Discharges not authorised in terms of this General Discharge Authorisation**

Discharges of effluent into the receiving environments listed below are not authorised in terms of this General Discharge Authorisation:

- 4.1. the bays set out in Annexure 2;
- 4.2. estuaries, except for those estuaries inside a port as set out in Annexure 3;
- 4.3. marine protected areas declared in terms of the National Environmental Management: Protected Areas Act, 2003 (Act No. 57 of 2003); and
- 4.4. special management areas declared in terms of section 23 of the Act.

#### **5. Monitoring requirements**

- 5.1. All analysis of effluent samples must be screened for the constituents listed in Table 1 and where applicable, Table 2.
- 5.2. The analysis of all effluent samples must be undertaken at a SANAS accredited laboratory.



- 5.3. In respect of a once-off discharge, the person responsible for the discharge must, within 15 calendar days after the date of the discharge, submit a once-off analysis report to the Department of samples taken of the effluent discharged.
- 5.4. For discharges other than a once-off discharge, the quality of the effluent discharged into coastal waters must be monitored and sent to the laboratory for analysis in accordance with 5.1 on a quarterly basis by taking effluent samples of the effluent at a location-point prior to its discharge into coastal waters, for the first year only. Those analysis reports must be sent to the Department every quarter. After the first year, the person responsible for the discharge must continue to take effluent samples at a location-point prior its discharge into coastal waters and have those samples analysed at the laboratory once every six months. These analysis reports must be sent to the Department bi-annually.
- 5.5. In addition, the person in charge of a discharge must submit a report setting out the quantity of effluent discharged into coastal waters together with each effluent analysis report submitted in accordance with the requirements set out above.
- 5.6. All reports must be submitted to the Department by hand, by post or by email, to the following address:

**By hand:** National Department of Environment, Forestry and Fisheries  
**Attention:** Director responsible for Coastal Pollution  
Branch: Oceans & Coasts  
2 East Pier Building, East Pier Road  
Victoria & Alfred Waterfront, Cape Town

**By Post:** National Department of Environment, Forestry and Fisheries  
**Attention:** Director responsible for Coastal Pollution  
Branch: Oceans & Coasts  
Private Bag x4390  
CAPE TOWN  
8002

**By e-mail:** Mtshikot@environment.gov.za

**Annexure 1 - Tables****Table 1: General and Special effluent limits for organic and inorganic constituents in effluent**

<b>Organic and inorganic constituents</b>	<b>Unit</b>	<b>General limit</b>	<b>Special limit</b>
Ammonia (ionised and un-ionised) as N	mg/l	10	2
Arsenic	mg/l	0.8	0.04
Cadmium	mg/l	0.02	0.001
Total Chlorine Residual	mg/l	0.2	0.01
Chromium (VI)	mg/l	0.2	0.01
Copper	mg/l	0.3	0.015
Cyanide	mg/l	0.1	0.005
Fluoride	mg/l	150	7.5
Lead	mg/l	0.2	0.01
Mercury	µg/l	1.6	0.08
Nickel	mg/l	0.5	0.025
Nitrate as Nitrogen	mg/l	20	3.5
Nitrogen (Total Kjeldahl Nitrogen)	mg/l	100	10
Polychlorinated Biphenyls (PCBs)	µg/l	0	0
Chlorophenols	mg/l	0	0
Ortho-Phosphate as Phosphorus	mg/l	20	1
Radioactivity	µC/ml	0	0
Pesticides (Dieldrin, Endrin, DDT)	µg/l	0	0
Soap, oil or grease	mg/l	20	10
Hydrogen sulphide	mg/l	0.2	0.01
Total Suspended Solids (TSS)	mg/l	50	10
Tributyltin	µg/l	0	0
Zinc	mg/l	2	0.1

**Note:** In Table 1, the value "0" means that the constituent in question must not be present in the effluent at all.

**Table 2: General and Special effluent limits for physico-chemical properties of the effluent**

<i>Physico-chemical properties</i>	<i>Unit</i>	<i>General limit</i>	<i>Special limit</i>
Biological Oxygen Demand (BOD)	mg/l	50	10
Chemical Oxygen Demand (COD)	mg/l	250	75
Dissolved oxygen	mg/l	50% saturation	75% saturation
pH	pH	7.1 - 8.3	7.3 - 8.2
Temperature	°C	±3 of ambient	±2 of ambient
Salinity	psu	37	36

**Annexure 2 – List of bays where this General Discharge Authorisation is not applicable**

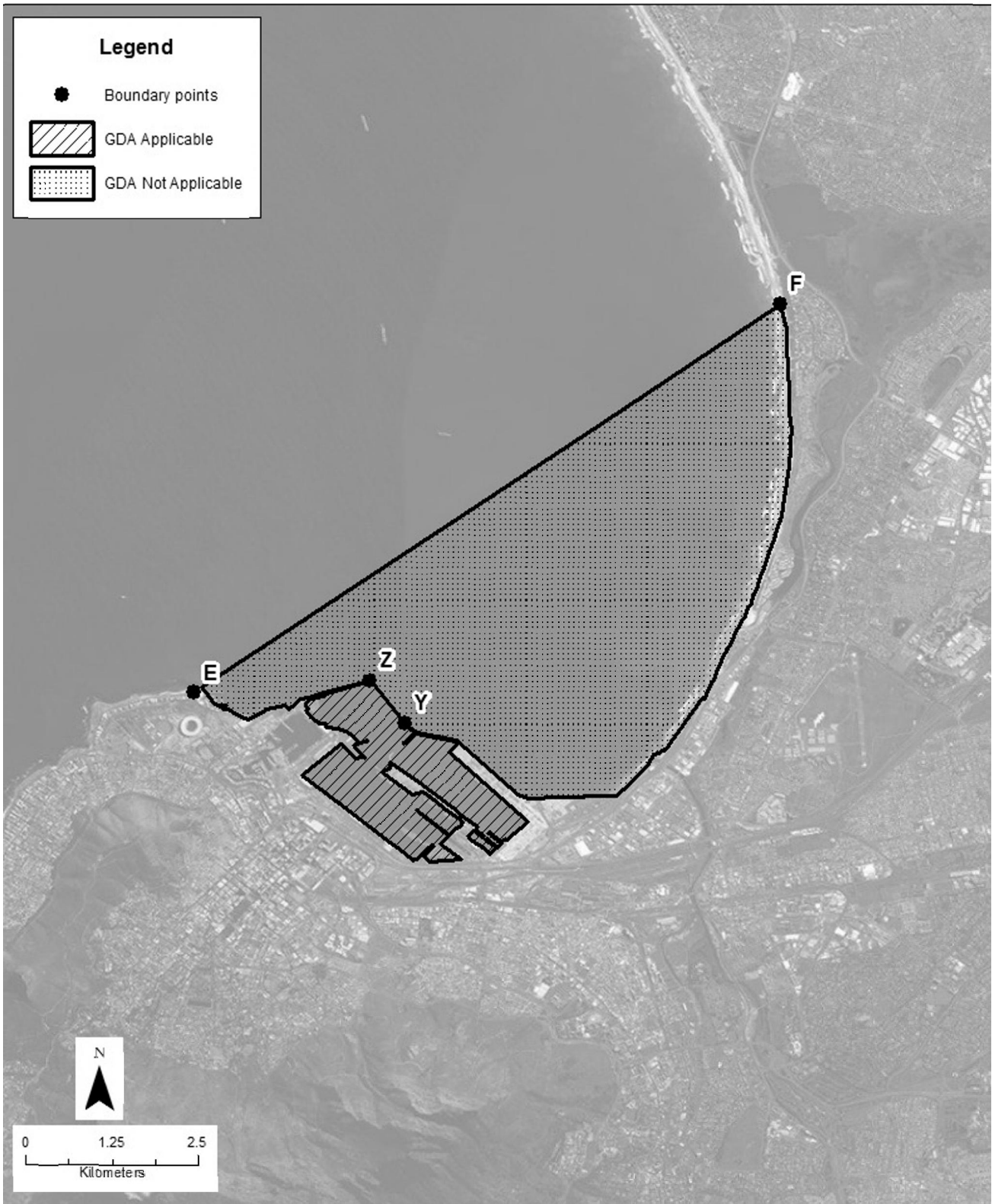
Name of bay	Location on map	Seaward GPS boundary for purposes of this GDA
Saldanha Bay	A	33° 4'7.10"S; 17°58'26.09"E to
	B	33° 2'19.16"S ;17°56'8.50"E
False Bay	C	34°21'27.01"S; 18°49'19.92"E to
	D	34°21'37.50"S; 18°29'50.97"E
Table Bay	E	33°53'57.26"S; 18°24'41.24"E to
	F	33°51'00.2196"S; 18°29'16.2132"E
Hout Bay	G	34° 4'36.07"S; 18°21'18.26"E to
	H	34° 3'42.98"S; 18°20'25.00"E
Gansbaai	I	34°34'42.82"S; 19°20'31.44"E to
	J	34°35'6.45"S; 19°20'22.31"E
Mossel Bay	K	34°11'6.34"S; 22° 9'30.87"E to
	L	34° 4'58.93"S; 22° 9'52.34"E
Plettenberg Bay	M	34° 6'28.78"S; 23°24'39.67"E to
	N	34° 0'24.01"S; 23°27'12.10"E
St Francis Bay	O	34°11'51.74"S ; 24°52'25.55"E to
	P	34° 6'10.81"S; 24°53'26.82"E

**General exception:** Where a port is located within the territory of a bay as set out in this annexure, that port is excluded from the prohibited bays in this annexure and that port must be regarded as a port listed in Annexure 3, while the rest of the bay remains excluded from this General Discharge Authorisation.

**Annexure 3 List of ports to which this General Discharge Authorisation is applicable**

<b>Name of port</b>	<b>Location on map</b>	<b>Seaward GPS boundary of Port for purposes of this General Discharge Authorisation</b>
Port Nolloth	Q	29°15'51.55"S; 16°52'6.24"E to
	R	29°15'49.10"S; 16°52'7.21"E
Port of East London	S	33° 1'39.18"S; 27°55'2.40"E to
	T	33° 1'41.08"S; 27°55'30.29"E
Port of Ngqura (Coega)	U	33°48'33.50"S; 25°41'25.94"E to
	V	33°49'5.49"S 25°41'37.82"E
Port of Port Elizabeth	W	33°57'18.29"S; 25°38'19.63"E to
	X	33°57'10.80"S; 25°38'36.69"E
Port of Cape Town	Y	33°54'11.11"S; 18°26'20.06"E to
	Z	33°53'51.69"S; 18°26'3.99"E
Port of Mossel Bay	AA	34°10'30.22"S; 22° 8'49.24"E to
	AB	34°10'34.25"S; 22° 8'43.52"E
Port of Durban	AC	29°51'59.85"S; 31° 3'27.12"E to
	AD	29°51'55.60"S; 31° 3'50.25"E
Port of Richards Bay	AE	28°48'51.81"S; 32° 5'51.90"E to
	AF	28°48'22.63"S; 32° 5'53.34"E
Port of Saldanha	AG	33°02'9.20"S; 17°58'58.06"E to
	AH	33°02'12.21"S; 17°58'23.89"E

# General Discharge Authorisation Not Applicable: Table Bay





# General Discharge Authorisation Applicable: Port Nolloth

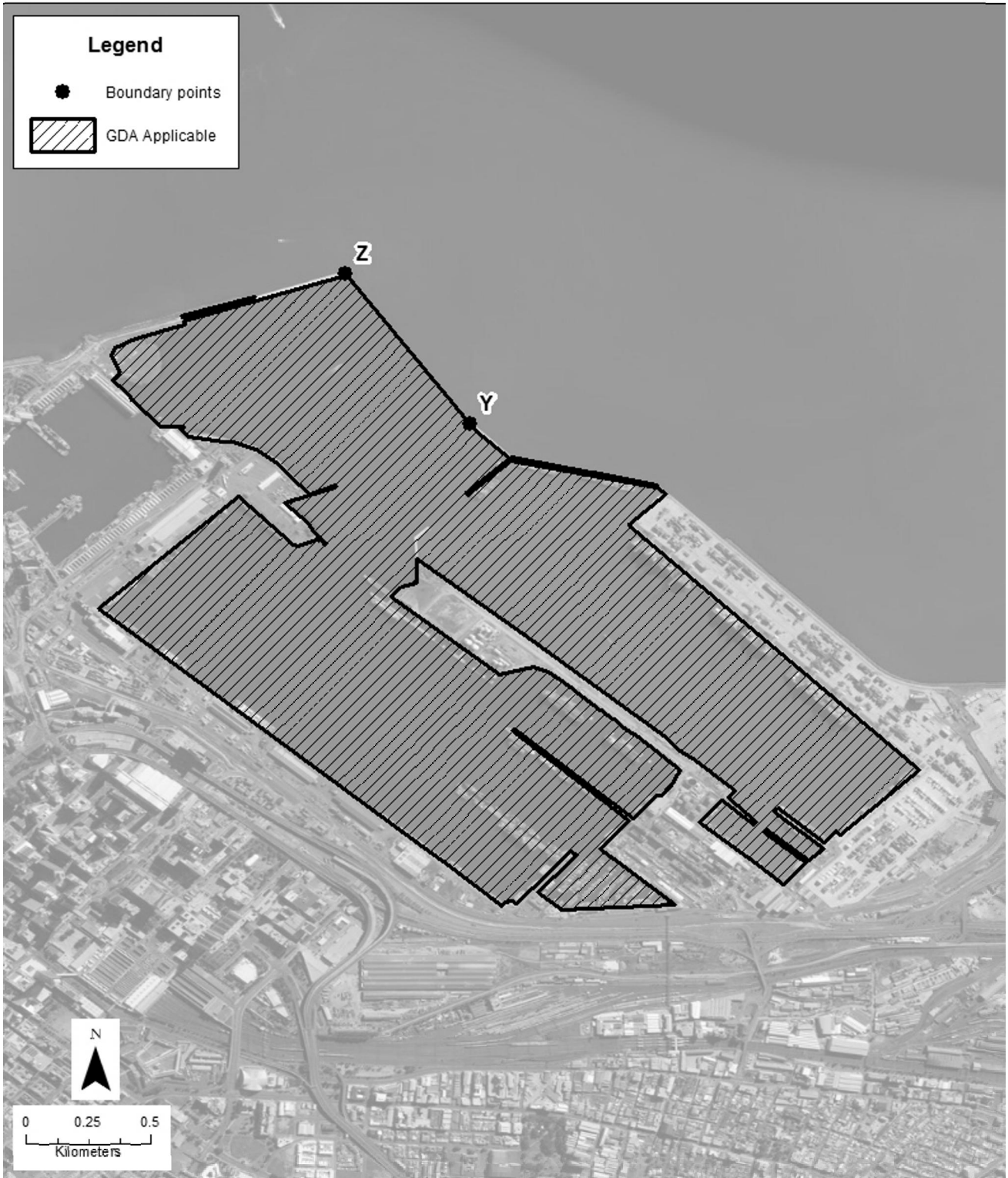


# General Discharge Authorisation Applicable: Port of Port Elizabeth

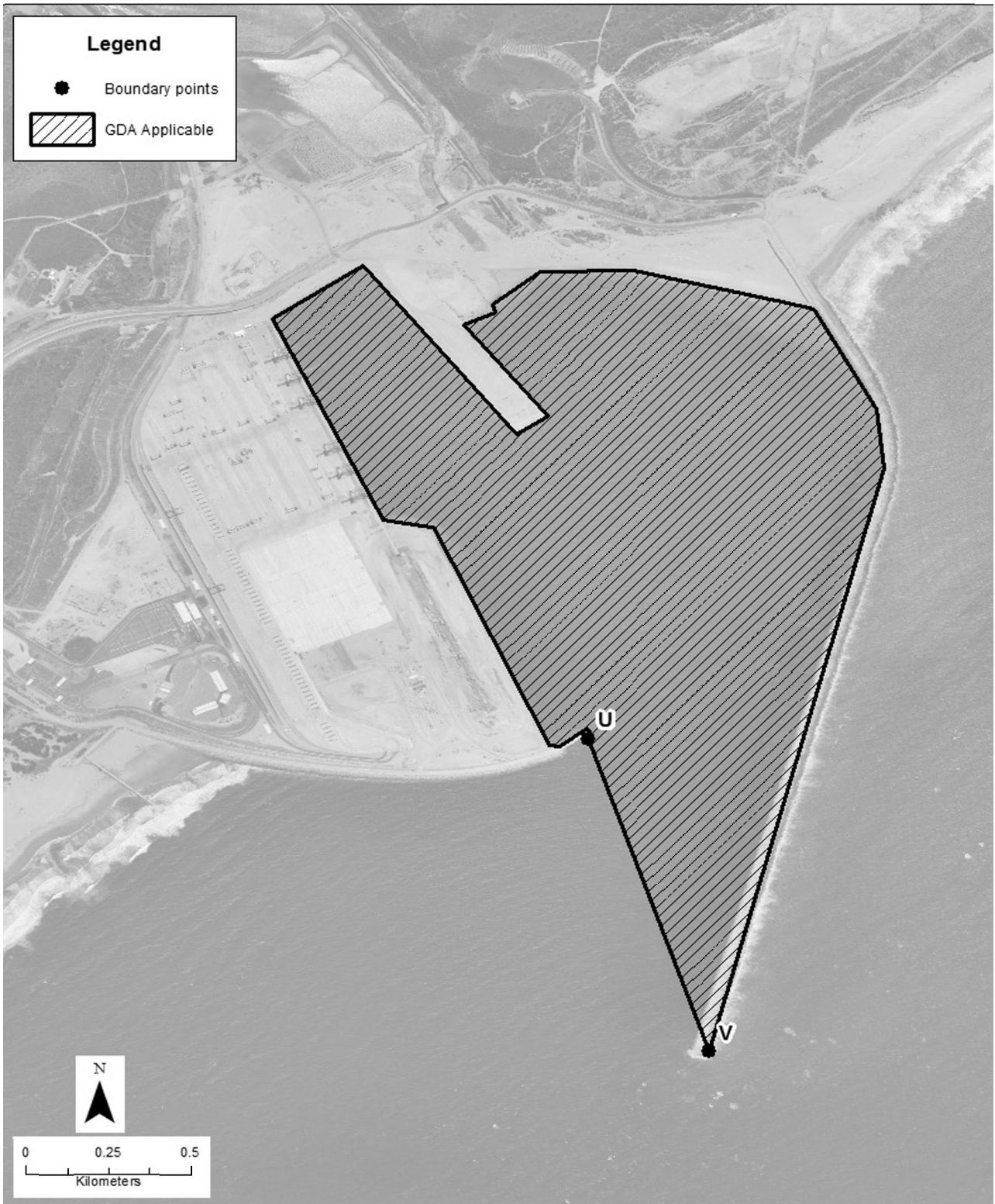




# General Discharge Authorisation Applicable: Port of Cape Town



### General Discharge Authorisation Applicable: Port of Ngqura (Coega)

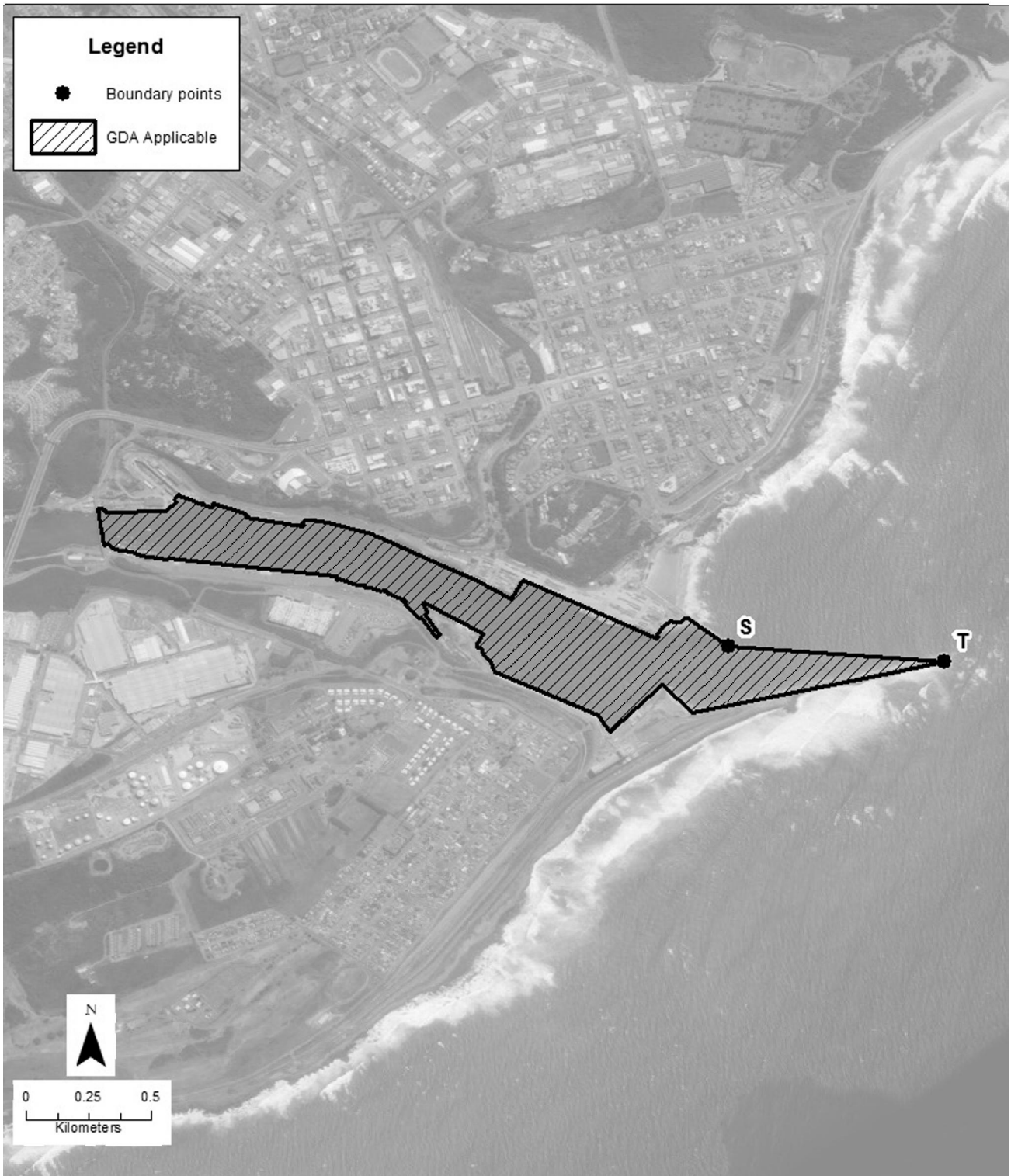




# General Discharge Authorisation Not Applicable: Saldanha Bay



# General Discharge Authorisation Applicable: Port of East London





# General Discharge Authorisation Applicable: Port of Durban

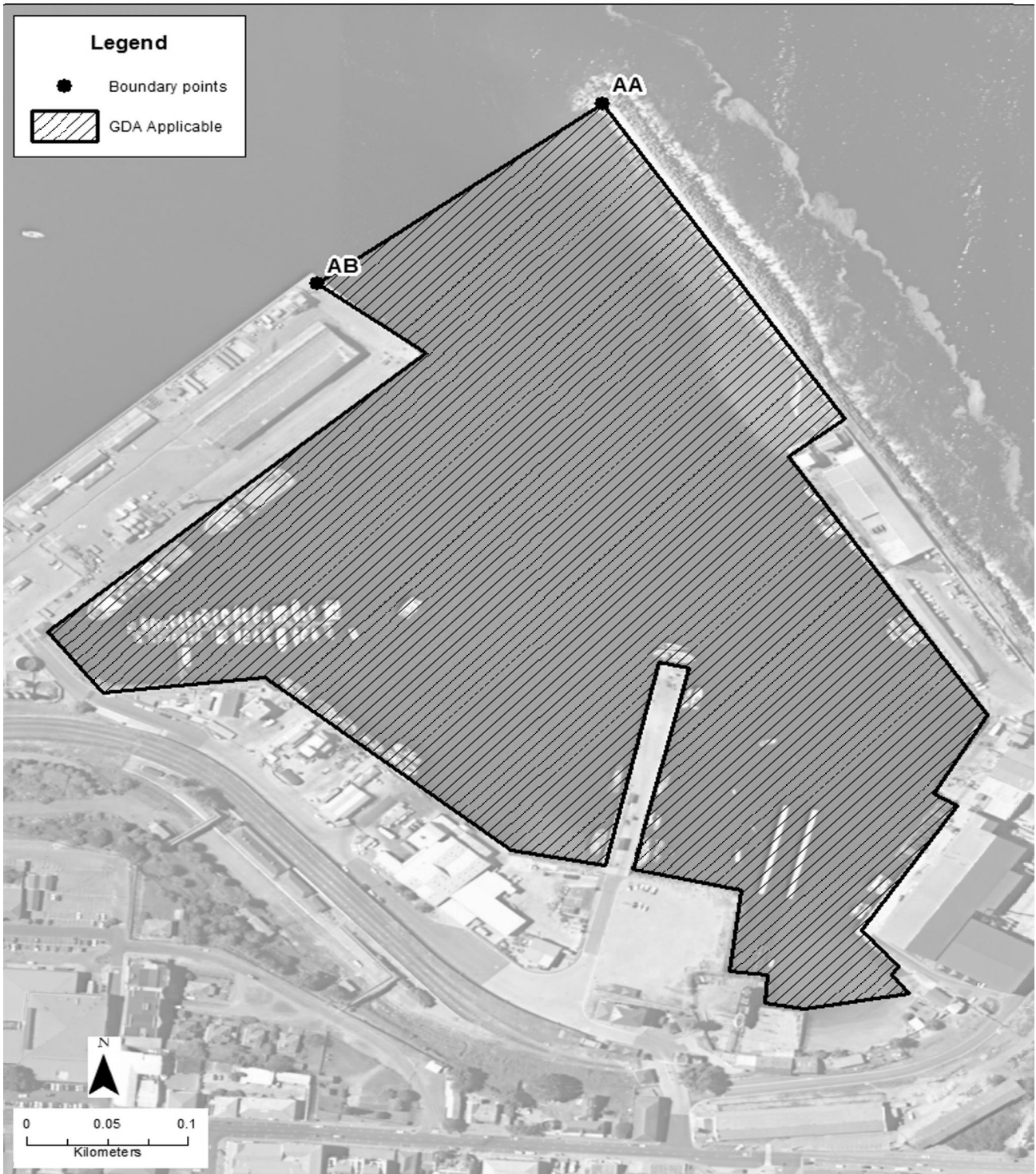


# General Discharge Authorisation Applicable: Port of Richards Bay

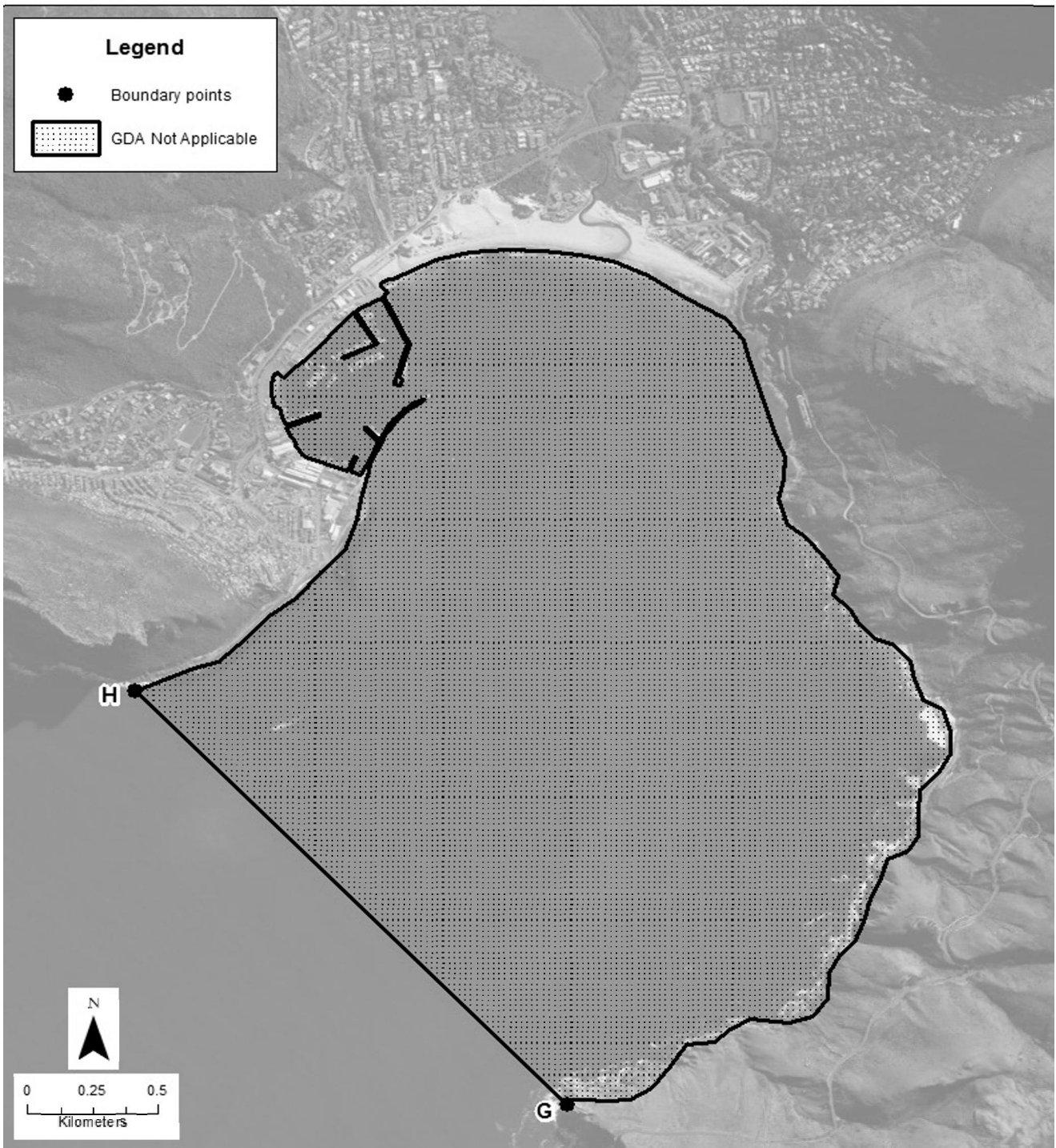




# General Discharge Authorisation Applicable: Port of Mossel Bay

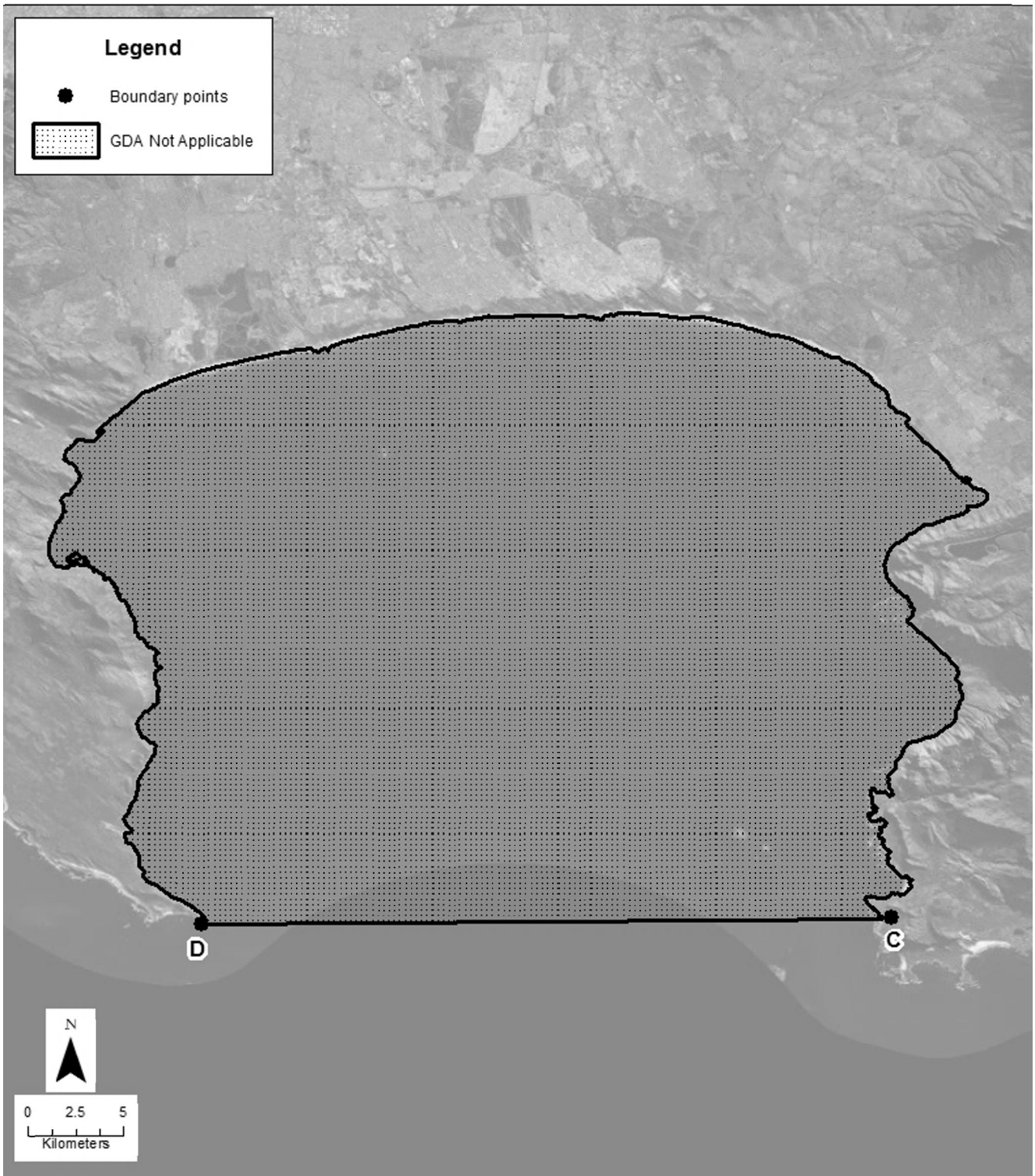


# General Discharge Authorisation Not Applicable: Hout Bay

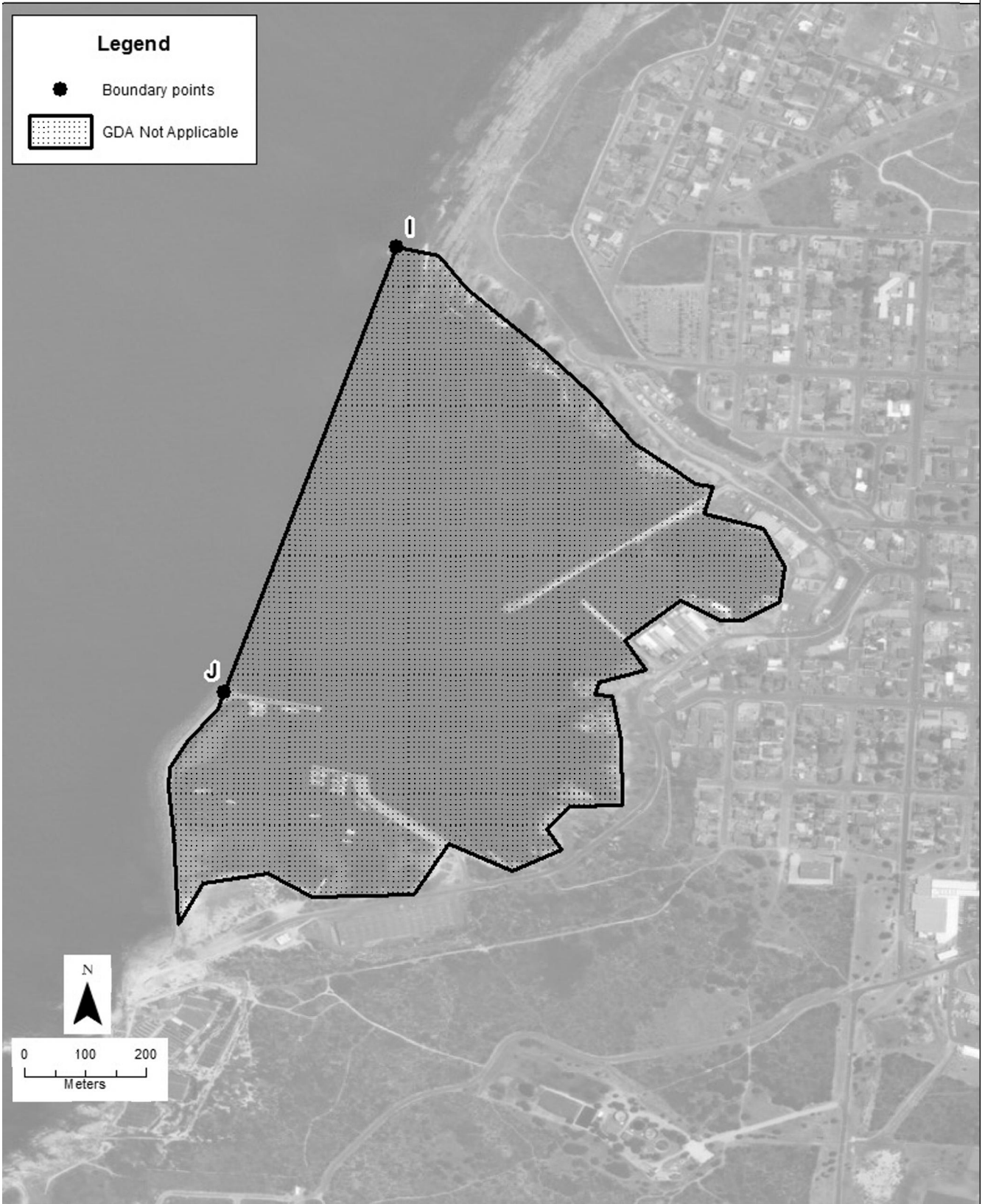




# General Discharge Authorisation Not Applicable: False Bay

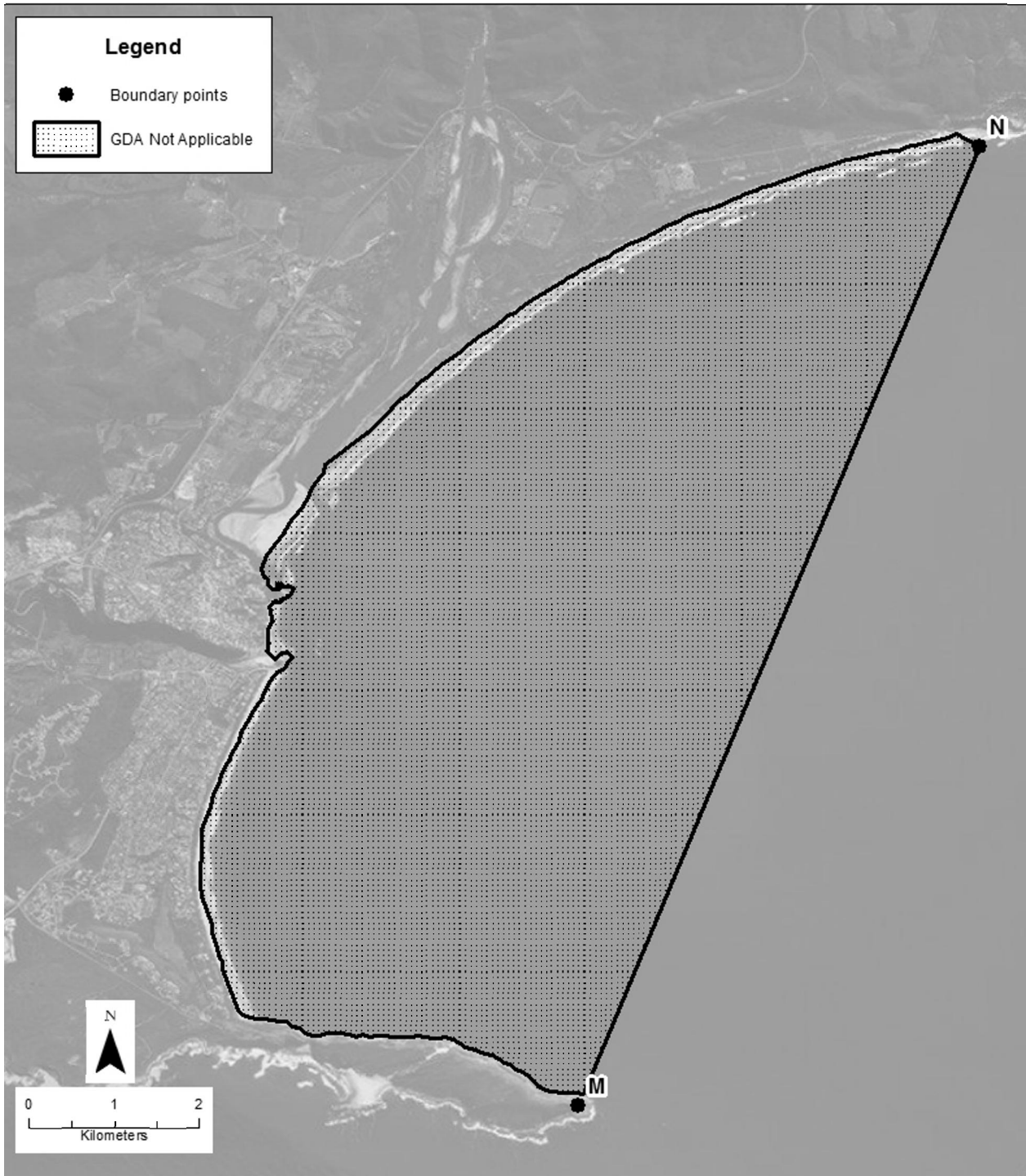


# General Discharge Authorisation Not Applicable: Gansbaai





# General Discharge Authorisation Not Applicable: Plettenberg Bay

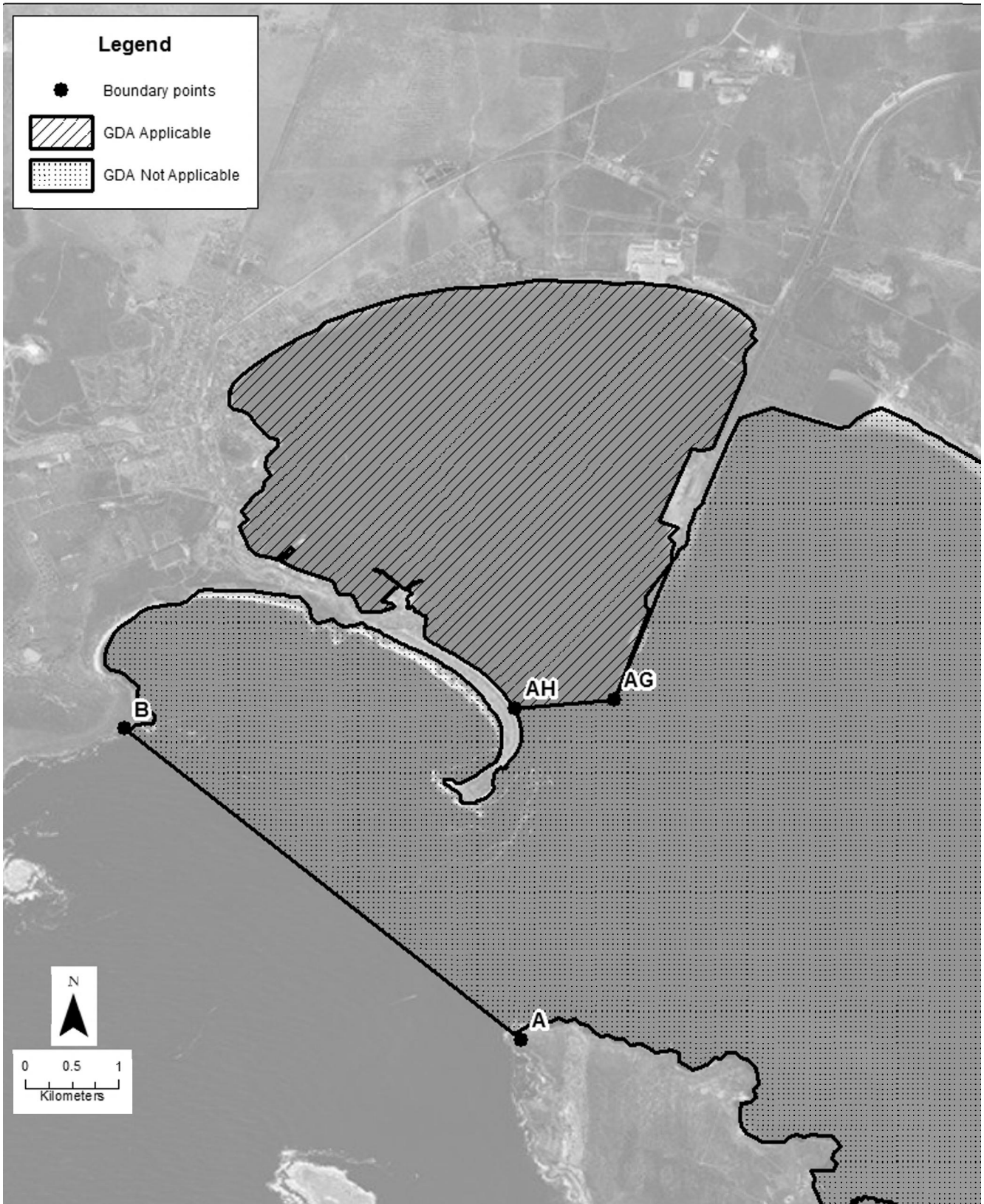


### General Discharge Authorisation Not Applicable: St Francis Bay





# General Discharge Authorisation Applicable: Port of Saldanha



# General Discharge Authorisation Not Applicable: Mossel Bay

