

NOTICE 939 OF 2010**DEPARTMENT OF ENVIRONMENTAL AFFAIRS****NATIONAL ENVIRONMENTAL MANAGEMENT: AIR QUALITY ACT, 2004
(ACT NO. 39 OF 2004)****NOTICE OF INTENTION TO DECLARE THE WATERBERG PRIORITY AREA IN TERMS OF
SECTION 18(1) OF THE NATIONAL ENVIRONMENTAL MANAGEMENT: AIR QUALITY ACT,
2004 (ACT NO. 39 OF 2004)**

I, Buyelwa Sonjica, Minister of Water and Environmental Affairs, hereby give notice of my intention, under section 57(1), read with section 18(1) of the Act, to declare the Waterberg Priority Area. A description of the proposed boundaries of the Waterberg Priority Area is set out in the Schedule attached hereto.

The full document can be downloaded by members of the public at the following website www.saaqis.org.za. Alternatively, copies may be requested from the following person:

Ms Mathabo Phoshoko
Tel: (012) 310 3365
E-mail: MPhoshoko@environment.gov.za

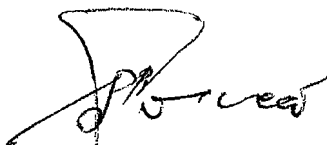
Members of the public are invited to submit written representations or comments to the Minister, within 30 days of publication of the notice in the *Gazette*, to the following addresses:

By post to: The Director-General: Environment Affairs
 Attention: Ms Mathabo Phoshoko
 Private Bag X447
 Pretoria, 0001

By fax to: (012) 320-1167, and e-mail to: MPhoshoko@environment.gov.za

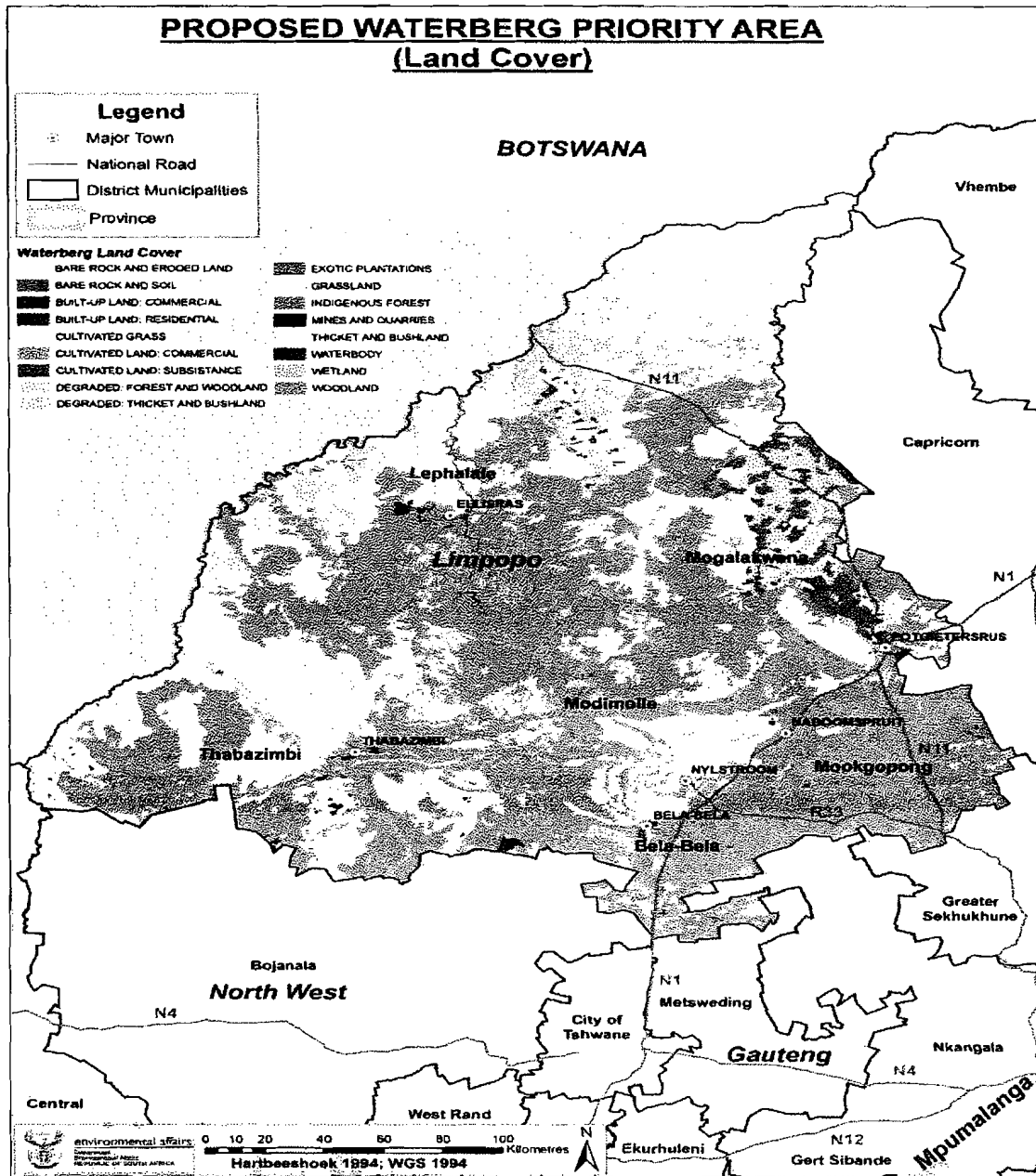
Or hand delivered at Corner Pretorius and Van der Walt Streets, Fedsure Forum Building, 2nd Floor, North Tower. Any enquiries in connection with the general notice can be directed to Dr Thuli Mdluli at (012) 310-3436 or Ms Mathabo Phoshoko at (012) 310-3365.

Comments received after the closing date may not be considered.



BUYELWA SONJICA
MINISTER OF WATER AND ENVIRONMENTAL AFFAIRS

SCHEDULE



The identified area to be known as the Waterberg Priority Area includes the areas illustrated on the map above and contained within the boundaries of: (i) the Waterberg District Municipality in Limpopo Province; (ii) Thabazimbi Local Municipality (Waterberg) in Limpopo Province; (iii) Modimolle Local Municipality (Waterberg) in Limpopo Province; (iv) Mogalakwena Local Municipality (Waterberg) in Limpopo Province; (v) Bela Bela Local Municipality (Waterberg) in Limpopo Province; (vi) Mookgopong Local Municipality (Waterberg) in Limpopo Province; and (vii) Lephalale Local Municipality (Waterberg) in Limpopo Province.